

FOR
HOME AND INDUSTRY



PROFESSIONAL
PAINTS

POLRUST
water-dilutable
undercoat

FOR RUSTED SURFACES

Polrust®
IS NON-FLAMMABLE
AND NON-TOXIC



BENEFITS

Polrust® is used where, for technical or economic reasons, it is not possible to prepare the substrate with abrasive blasting.

Polrust® brings tangible economic effects: it saves time and money, as it eliminates a significant part of the costs of mechanical surface preparation before painting.

Polrust® is irreplaceable while painting corroded gates, grates, nets, fences, barriers, pipes, metal sheets, metal profiles, as well as steel truss structures, halls, etc.

POLRUST

for corroded steel
& cast iron surfaces

RUST CONVERTER

WARNING!

DO NOT USE PETROL, NITROGEN AND
OTHER PETROLEIC SOLVENTS TO
DEGREASE THE SURFACE

APPLICATION

On surfaces cleaned of rust up to grade 3 purity according to PN ISO 8501-1: 1996. Polrust® binds to the substrate physically and chemically, creating, after drying, a perfect undercoat for surface decorative paints.

As a temporary protection paint - one layer can protect against corrosion from a few to a dozen months or so (depending on operating conditions).

For long-term protection - as a primer in the sets with other painting materials. The longest corrosion resistance is demonstrated by the set with alkyd, chlorinated rubber and acrylic paints. Polrust® primer can be applied with fillers (acrylic, epoxy, etc.).



ekoCYNKAL
for wood
& workwood

ALSO FOR RAW WOOD



BENEFITS

EkoCynkal is a water-dilutable primer and enamel in one. It has a high resistance coating: it does not yellow and does not crack under the sun exposure. In addition, it has a very good adhesion to the surface and a short drying time. Available in a wide range of durable and vivid colors.

ekoCYNKAL

for facades
& metal

ALSO FOR HEATERS

APPLICATION

EkoCynkal is a high technology water-dilutable acrylic primer and enamel paint in one with anti-corrosion and decorative properties. It can be used widely for decorative painting of heaters, radiators, pipes and other metal elements as well as wood, paneling, plasters and concrete.



CYNKAL

anti-corrosion primer & enamel paint

EVEN FOR RUSTY SURFACES



BENEFITS

Cynkal[®] is a high technology anti-corrosion primer and enamel paint in one. It can be used directly on any clean or metal surfaces manually cleaned of corrosion with no need of a primer (steel, zinc coating, aluminum, copper and more).

CYNKAL term 600

THERMAL RESISTANT TO 600 °C

APPLICATION

Cynkal Term 600 is a paint intended for painting steel structures exposed only to temperatures of up to 600°C. It contains heat-resistant and barrier pigments. Irreplaceable for use for heavily heated steel surfaces in the household and in industry.

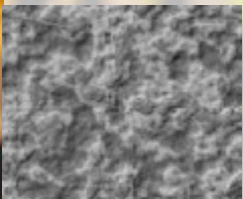


CYNKAL texture

FOR GRATES & FENCES



TEXTURE



HAMMERED

APPLICATION

Cynkal[®] is an all purpose acrylic primer and enamel paint of excellent adhesion to all surfaces: steel, zinc coating, wood, plaster, concrete, rusty surface and some plastics. It is also effective for renovation of old paint coatings. Cynkal[®] in texture version is especially recommended for fences' renovation.

CYNKAL unidach

FOR ROOFING, ZINC COATING & METAL

BENEFITS

Cynkal[®] is a non-undercoat acrylic primer and enamel paint perfect for roof painting. The PTFE coating provides increased resistance to UV radiation, dirt and corrosion.



MIOX

METALLIC

POLKOR

anti-corrosive
metal primer

DRIES FAST

BENEFITS

For use under all surface paints,
just in 20 minutes after painting.

APPLICATION

Polkor is an alkyd paint intended for priming steel and cast iron surfaces as well as wood, plaster and paneling materials. It can also be used as an anticorrosive primer under alkyd paints and modified alkyd enamels.



RAPID quick drying alkyd enamel for wood and metal

INSTEAD OF NITRO PAINTS

BENEFITS

After drying, it creates aesthetic coatings with high gloss and high hardness, and the colors retain their durability for many years. It works perfectly in plants with a fast production cycle and for renovation painting of machines and devices.

APPLICATION

Rapid® is designed for decorative painting of metal and wooden objects and structures, joinery, paneling and plasters inside and outside.



BENEFITS

Aquapox Beton is a glossy water-dilutable epoxy paint for painting concrete, which is characterized by high adhesion to the concrete subfloor, high resistance, excellent coating power and a rich palette of durable and vivid colors. This two-component paint creates a coating with very good mechanical and chemical parameters, resistant to abrasion and periodic exposure to oil products.

AQUAPOX BETON
water-dilutable
paint for concrete
GARAGES AND WAREHOUSES



APPLICATION

Polpox Beton paint is designed for painting concrete surfaces in production halls, mechanical workshops, garages and warehouses. Suitable for painting fences and concrete structures. It can also be used for wood and metal. It creates a coating with very good mechanical and chemical parameters resistant to abrasion and periodic exposure to oil products.

POLPOX BETON
chemical resistant
paint for concrete

HALLS AND WORKSHOPS



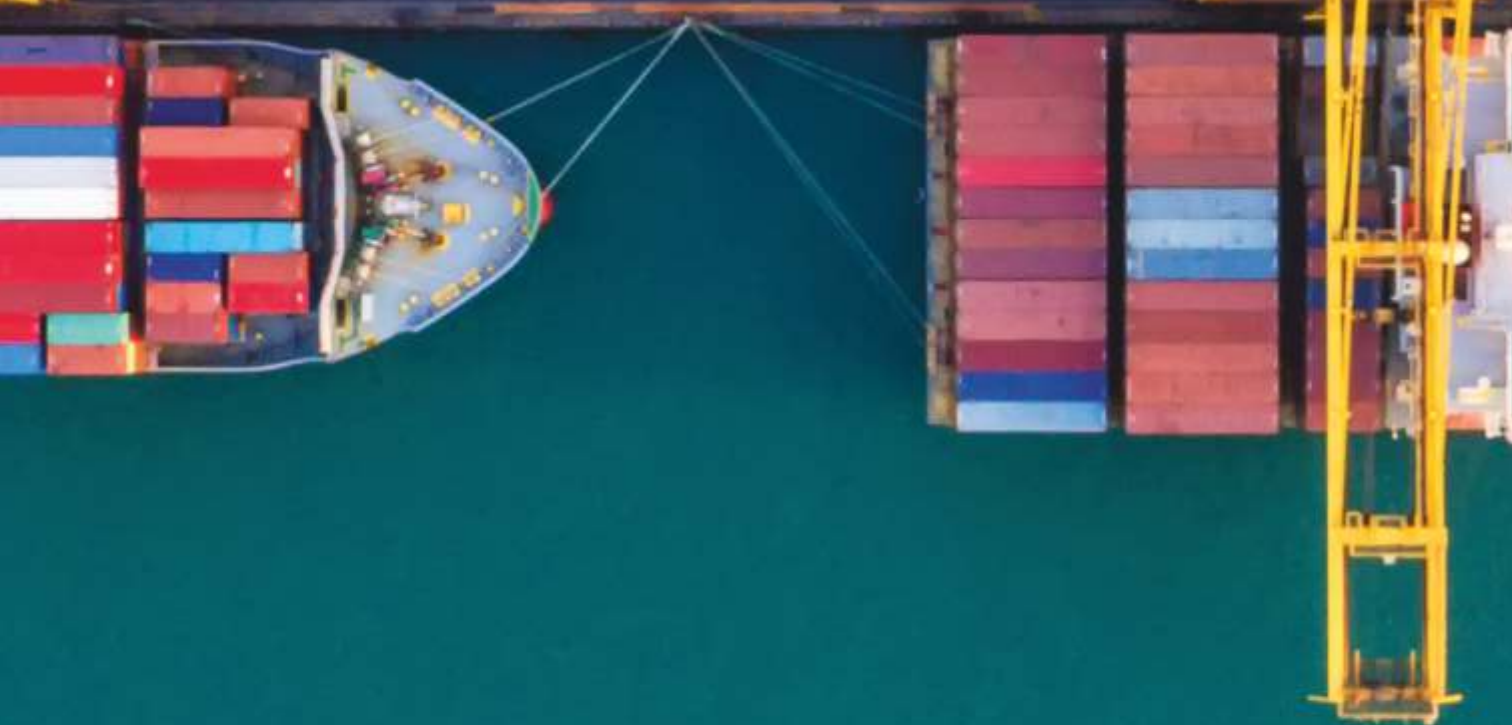
Korektor M

CYNKAL-SUPPLEMENTARY PRODUCTS

APPLICATION

Korektor M[®] added to Cynkal[®] primer and enamel paint in one increases the hardness and resistance of the coating to scratch, corrosion, UV radiation and the reaction of solvents.





Ekosolwent

CYNKAL-SUPPLEMENTARY PRODUCTS

APPLICATION

Ekosolwent® is an ecological concentrate for cold removing of dirt and grease from the surface before painting.





ul. Przecławaska 5, 03-879 Warszawa
tel. 22 744 23 90, 22 744 23 91
e-mail: biuro@malexim.pl
www.malexim.pl

